

漢
廳

China Doll IV Coach House

Rear of 2615 N. Halsted

China Doll IV is a single residence with 1920 sq. ft. of living area plus a built in garage. Each of the two 3rd floor bedrooms has a full private bath. Each of the other two floors has a half bath. The ground floor has laundry facilities and a third bedroom. There is also a complete office area on the 3rd floor with a computer and a multi-function printer/fax. The main floor is one large open room with living room, dining room, and kitchen. There are 2 full beds in the large bedroom, two twins in the 2nd bedroom, a full futon in the 3rd bedroom, two queen futons in the living room, and available Aerobeds.

South Side showing the deck. South exposure plus sky lights make for a very bright home.



Front door and patio



The Deck



Brand new eat in kitchen



Dining Room and Kitchen



Dining Room and Living Room



Fireplace and 46" Plasma Home Theater



Largest Bedroom



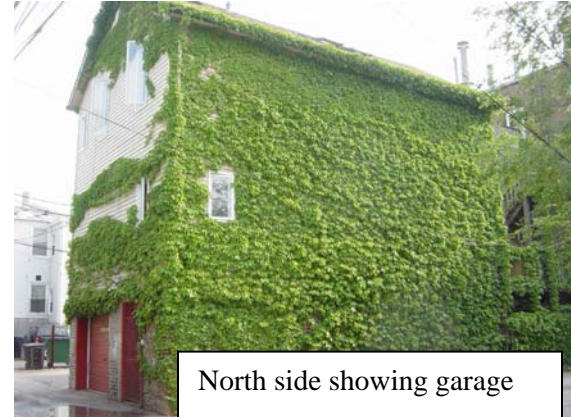
Second Bedroom



Complete office with Wireless DSL



Private Bath for Largest Bedroom



North side showing garage